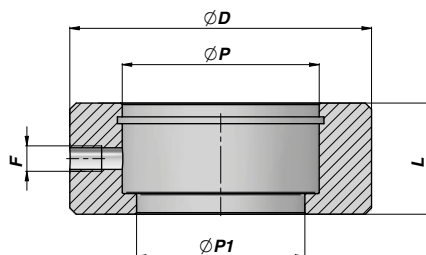


CAGEN

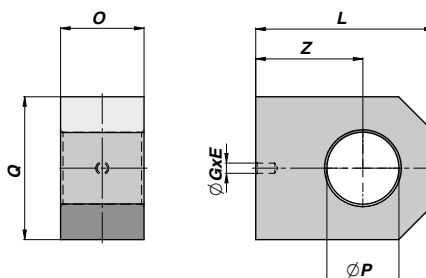
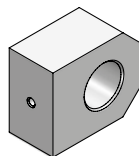
ANELLO A SALDARE PER SNODO "GE"
WELD-RING FOR "GE" BALL-JOINT

| Codice Code | Per For | ØD | L | ØP | ØP1 | F | kg | Confezione Box | Pz Pcs |
|---------------|---------|-----|----|----|-----|----|------|----------------|--------|
| CAGEN04015015 | GE ø15 | 40 | 15 | 26 | 22 | M6 | 0,09 | Z00CAGEN04015 | 100 |
| CAGEN05019020 | GE ø20 | 50 | 19 | 35 | 29 | M6 | 0,15 | Z00CAGEN05019 | 100 |
| CAGEN06023025 | GE ø25 | 60 | 23 | 42 | 35 | M6 | 0,26 | Z50CAGEN06023 | 50 |
| CAGEN07028030 | GE ø30 | 70 | 28 | 47 | 40 | M6 | 0,47 | Z50CAGEN07028 | 50 |
| CAGEN08530035 | GE ø35 | 85 | 30 | 55 | 47 | M6 | 0,79 | Z20CAGEN08530 | 20 |
| CAGEN09535040 | GE ø40 | 95 | 35 | 62 | 53 | M8 | 1,14 | Z10CAGEN09535 | 10 |
| CAGEN11040045 | GE ø45 | 110 | 40 | 68 | 60 | M8 | 1,87 | Z10CAGEN11040 | 10 |
| CAGEN12040050 | GE ø50 | 120 | 40 | 75 | 66 | M8 | 2,18 | Z05CAGEN12040 | 5 |
| CAGEN13850060 | GE ø60 | 138 | 50 | 90 | 80 | M8 | 3,40 | Z02CAGEN13850 | 2 |

MATERIALE : ACCIAIO S355J0 (Fe510C) - S355JR (A105)
MATERIAL : STEEL S355J0 (Fe510C) - S355JR (A105)

A RICHIESTA : INGRASSATORE VEDI PAGINA 103
ON REQUEST : GREASE NIPPLE SEE PAGE 103

COF

OCCHIO FISSO
MALE CLEVIS

| Codice Code | ØP | Q | O | Z | L | ØGxE | kg | Confezione Box | Pz Pcs |
|-------------|-------|-----|----|----|-----|------------|------|----------------|--------|
| COF1600000 | 16,20 | 35 | 20 | 25 | 42 | ø 4,25 x 8 | 0,19 | Z00COF1600000 | 100 |
| COF2000000 | 20,25 | 45 | 25 | 30 | 50 | ø 4,25 x 8 | 0,36 | Z50COF2000000 | 50 |
| COF2500000 | 25,25 | 50 | 30 | 35 | 60 | ø 4,25 x 8 | 0,56 | Z25COF2500000 | 25 |
| COF3000000 | 30,25 | 60 | 35 | 45 | 75 | ø 4,25 x 8 | 0,98 | Z20COF3000000 | 20 |
| COF3500000 | 35,25 | 70 | 40 | 55 | 90 | ø 4,25 x 8 | 1,61 | Z10COF3500000 | 10 |
| COF4000000 | 40,25 | 70 | 40 | 60 | 95 | ø 4,25 x10 | 1,62 | Z10COF4000000 | 10 |
| COF5000000 | 50,50 | 90 | 40 | 75 | 120 | ø 4,25 x10 | 2,64 | Z05COF5000000 | 5 |
| COF6000000 | 60,50 | 100 | 50 | 90 | 140 | ø 4,25 x10 | 4,22 | Z05COF6000000 | 5 |

MATERIALE : ACCIAIO S235JR (Fe360/Fe360B)
MATERIAL : STEEL S235JR (Fe360/Fe360B)